



FKG2

with SF6 breaking chamber



FKG2 without enclosure

Generator Circuit Breakers for power plants from 50 to 200 MW; 5,000 to 9,500 A; 63 kA

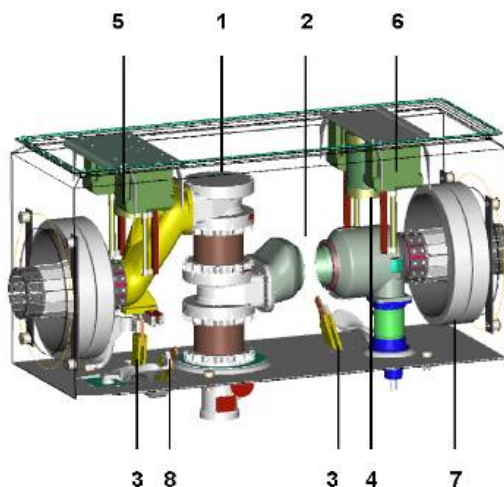
The FKG2 is the only Generator Circuit Breaker with a fully spring operated mechanism that has been used with highly proven reliability on all AREVA T&D switchgears for decades.

FKG2 provides you with a compact and flexible design (various positions of the mechanism and terminals) and is naturally cooled:

- > with enclosure for 8,400 A applications
- > without enclosure for 9,500 A applications

FKG2 Generator Circuit Breakers are tested and manufactured in accordance with International Standard IEEE C37.013 (1997).

All our units are ISO 9001: 2000 certified.



FKG2 Generator Circuit Breaker options:

- > Circuit breaker (1)
- > Motor-operated disconnect switch (2)
- > Starting disconnect switch for SFC (8)
- > Motor-operated grounding switch (1 per side) (3)
- > Capacitors adapted to breaking capacity (4)
- > ZnO surge arresters (1 per side) (5)
- > Voltage transformers (1 or 2 per phase) (6)
- > Current transformers (2 or 3 per phase) (7)
- > Monitoring system CBWatch-2

Customer Benefits

- The only Generator Circuit Breaker with fully spring operated mechanism
- Minimal maintenance
- Highly adaptable compact design, ideal for retrofit solutions



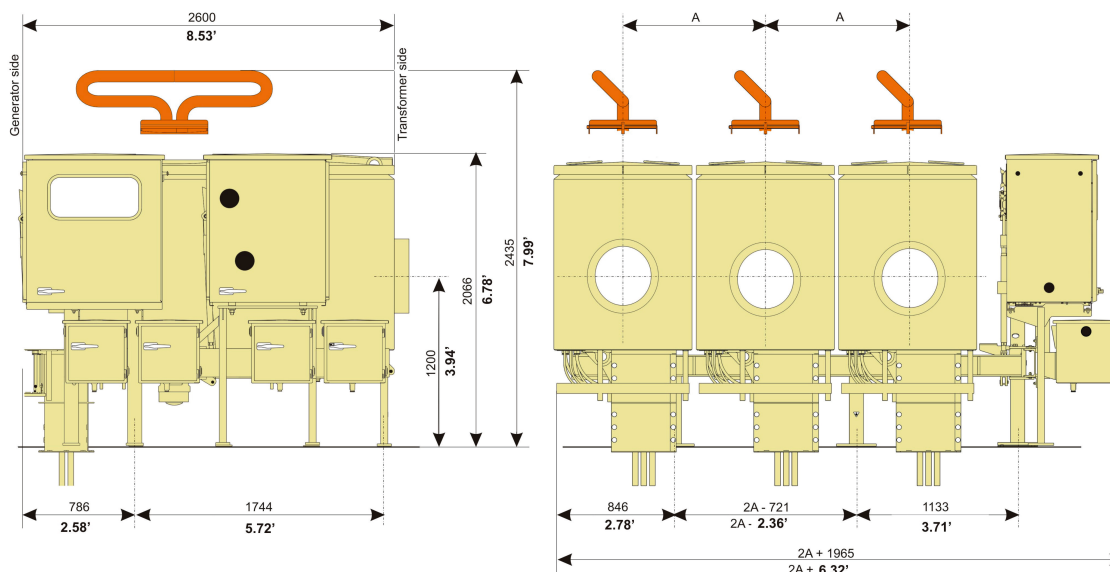
FKG2 with enclosure



Spring mechanism FK3.4



Operating principle FK3.4



Dimensions

>> Breaker Type		FKG2S	FKG2S	FKG2M
>> Enclosure		Without	With	With
>> Phase Distance (A)	mm inch	550 to 1,200 1.8' to 3.94'	1,000 to 1,200 3.28' to 3.94'	1,000 to 1,200 3.28' to 3.94'
>> Height of Pole Axis (B)	mm inch	Adaptable to project conditions	1,200 to 1,500 3.94' to 4.92'	1,200 to 1,500 3.94' to 4.92'
>> Total Height	mm inch	Adaptable to project conditions	2,066 6.78'	2,435 7.99'

Technical Data

>> Cooling System		none	none	natural
>> Rated Voltage	(kV)	24	24	24
>> Rated Short-Circuit Current	(kA)	63	63	63
>> Standard ambient air temperature range	(°C)	-25 / +40	-25 / +40	-25 / +40
>> Rated current in standard conditions 50Hz *	(A)	9,500	6,300	8,400
>> Rated current in standard conditions 60Hz *	(A)	9,000	6,100	8,100
>> Rated power frequency withstand voltage	(kV)	60	60	60
>> Rated lightning impulse withstand voltage	(kV peak)	125	125	125
>> Rated current duty cycle		CO-3min-CO	CO-3min-CO	CO-3min-CO
>> Rated short-circuit duty cycle		CO-30min-CO	CO-30min-CO	CO-30min-CO

*Standard Values. Different performances may be provided according to project conditions.

AREVA T&D Worldwide Contact Centre
<http://www.aveva-td.com/contactcentre/>
 Tel: +44 (0) 1785 250 070

www.aveva-td.com

Our policy is one of continuous development. Accordingly the design of our products may change at any time. Whilst every effort is made to produce up to date literature, this brochure should only be regarded as a guide and intended for information purposes only. Its contents do not constitute an offer for sale or advise on the application of any product referred to in it. We cannot be held responsible for any reliance on any decisions taken on its contents without specific advice.